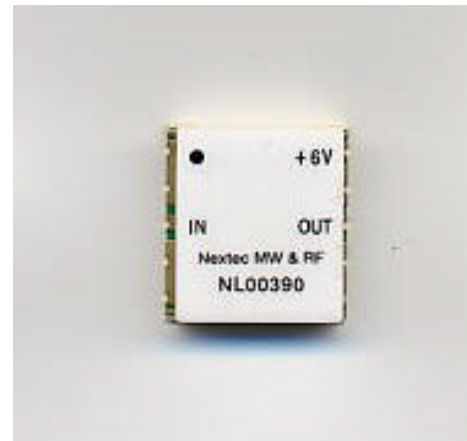


890-915 MHz Surface Mount High Linear Low Noise Amplifier

General Description

The NL00390 is a High Linear Low Noise Amplifier operating in 890 – 915 MHz frequency. The operating temperature is -30 °C through + 85 °C. This amplifier has been designed to offer “price-competitive, space-limited, easy-to-use” solution for design engineers in the mobile communication area. The amplifier is unconditionally stable for all impedance level. You can save design lead time, and manufacturing cost by adopting this pre-matched amplifier module.



Performance at 25 °C

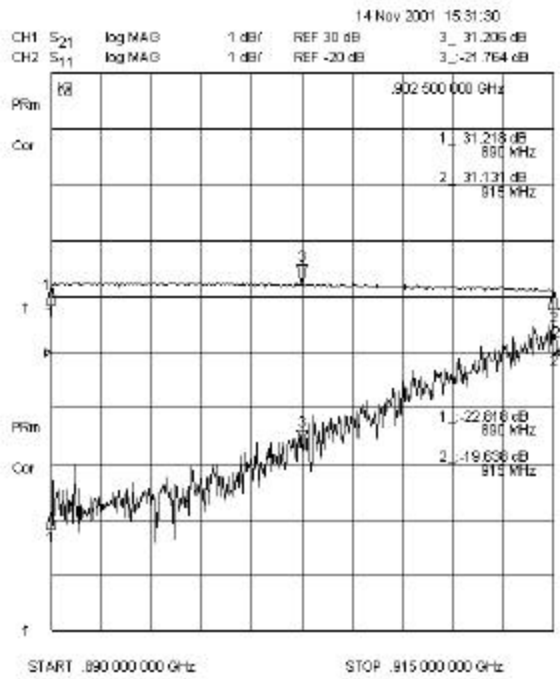
Parameter	Min.	Typ.	Max.	Units
Frequency	890		915	MHz
Gain	28	30		dB
Gain Flatness over operating frequency range			0.35	dB
Noise Figure		1.1	1.4	dB
Output Power at 1 dB Compression Point	18	21		dBm
Output Third Order Intercept Point with +10 dBm output power /tone	37	40		dBm
Input VSWR			1.5 : 1	
Output VSWR			1.5 : 1	
DC supply voltage (Vcc)		+6		V
Supplied Current			230	mA

Customized Designs: For custom designs, including both electrical and mechanical, please contact us at sales@nextec-rf.com.

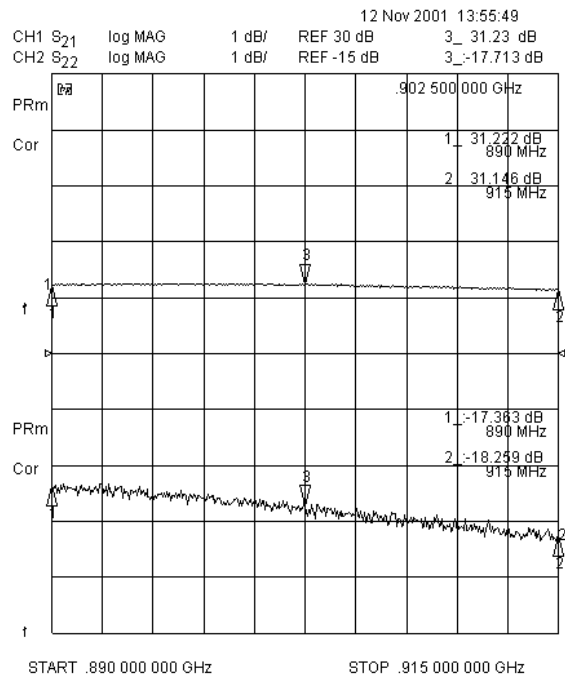
890-915 MHz Surface Mount High Linear
Low Noise Amplifier

Typical Test Data

Gain and Input Return Loss at 25 °C



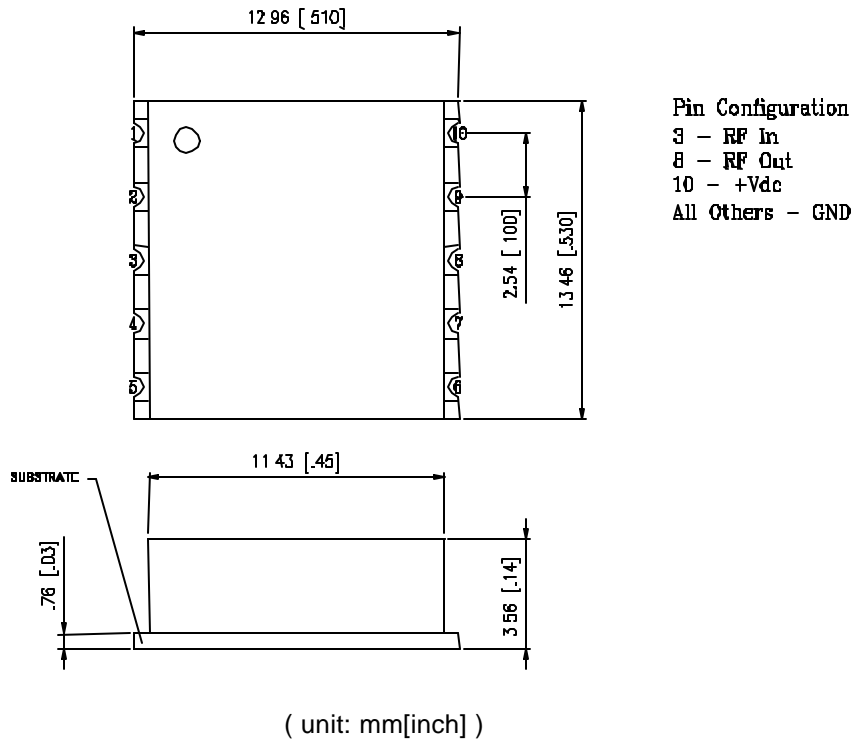
Gain and Output Return Losses at 25 °C



Customized Designs: For custom designs, including both electrical and mechanical, please contact us at sales@nextec-rf.com.

890-915 MHz Surface Mount High Linear
Low Noise Amplifier

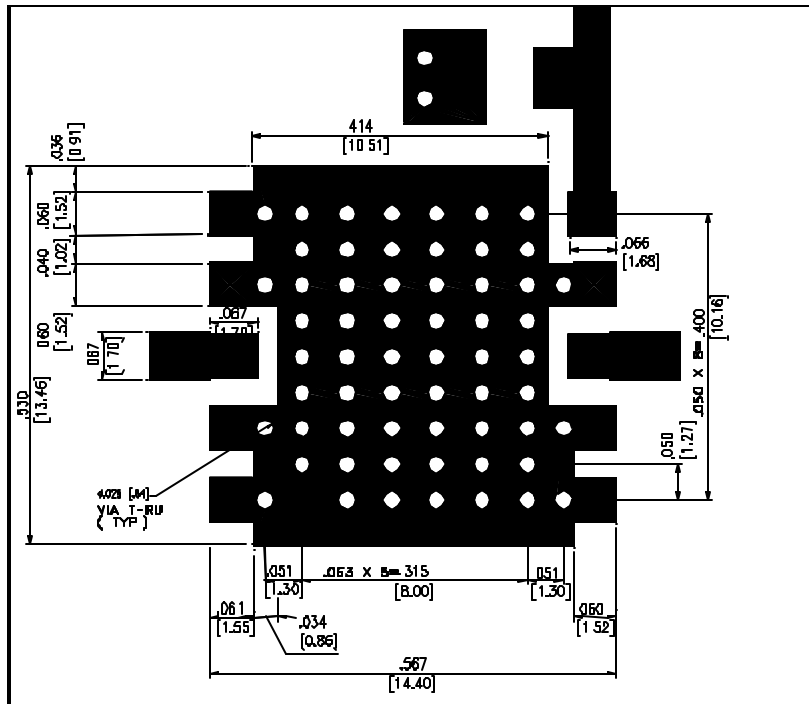
Outline Drawing



Customized Designs: For custom designs, including both electrical and mechanical, please contact us at sales@nextec-rf.com.

890-915 MHz Surface Mount High Linear
Low Noise Amplifier

Recommended Footprint



(unit: mm [inch])

Customized Designs: For custom designs, including both electrical and mechanical, please contact us at sales@nextec-rf.com.

3350 Scott Blvd. Bldg. 49, Santa Clara, CA 95054 • Phone: (408) 727-1189 • Fax: (408) 727-5915 • www.nextec-rf.com
April 10, 2003