

**1920-1990 MHz Surface Mount High Linear
Low Noise Amplifier**

General Description

The NL00394 is a Moderate Linear Low Noise Amplifier operating in 1920 – 1990 MHz frequency. The operating temperature is -30°C through $+85^{\circ}\text{C}$. This amplifier has been designed to offer “price-competitive, space-limited, easy-to-use” solution for design engineers in the mobile communication area. The amplifier is unconditionally stable for all impedance level. You can save design lead time, and manufacturing cost by adopting this pre-matched amplifier module.



Performance with 25 °C

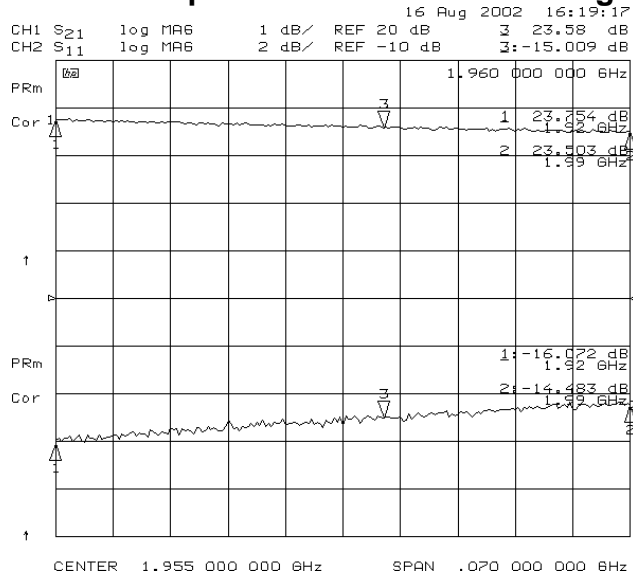
Parameter	Min.	Typ.	Max.	Units
Frequency	1920		1990	MHz
Gain	22	24		dB
Gain Flatness over operating frequency range			± 0.35	dB
Noise Figure		1.0	1.3	dB
Output Power at 1 dB Compression Point		18		dBm
Output Third Order Intercept Point with +5 dBm output power /tone	31	34		dBm
Input VSWR			1.5 : 1	
Output VSWR			1.5 : 1	
DC supply voltage (Vcc)		+6		V
Supplied Current			145	mA

Customized Designs: For custom designs, including both electrical and mechanical, please contact us at sales@nextec-rf.com.

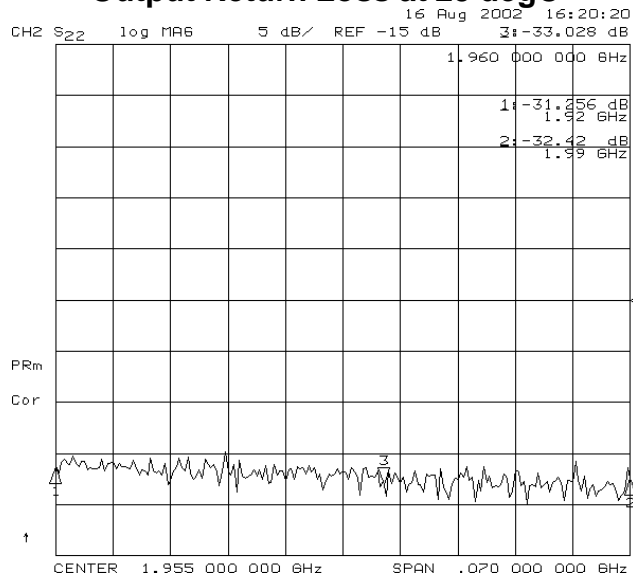
1920-1990 MHz Surface Mount High Linear
Low Noise Amplifier

Typical Test Data

Gain and Input Return Losses at 25 degC



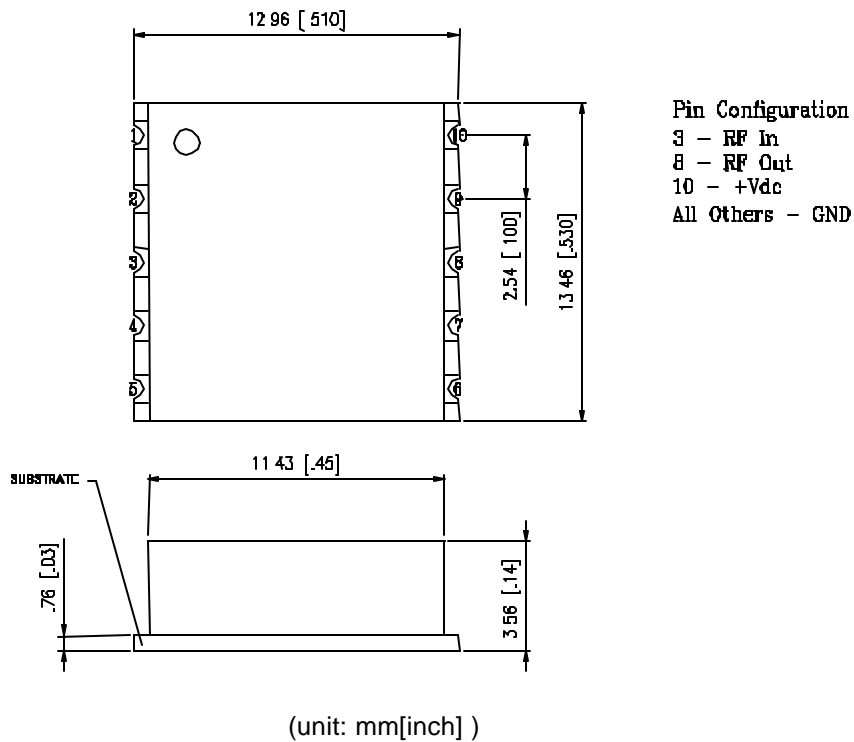
Output Return Loss at 25 degC



Customized Designs: For custom designs, including both electrical and mechanical, please contact us at sales@nextec-rf.com.

1920-1990 MHz Surface Mount High Linear
Low Noise Amplifier

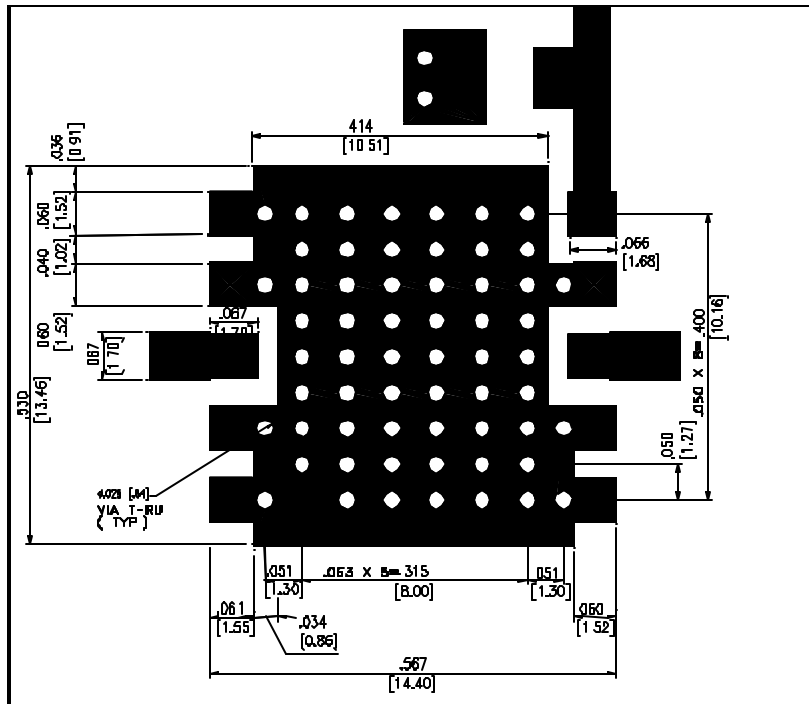
Outline Drawing



Customized Designs: For custom designs, including both electrical and mechanical, please contact us at sales@nextec-rf.com.

1920-1990 MHz Surface Mount High Linear Low Noise Amplifier

Recommended Footprint



(unit: mm [inch])

Customized Designs: For custom designs, including both electrical and mechanical, please contact us at sales@nextec-rf.com.

3350 Scott Blvd. Bldg. 49, Santa Clara, CA 95054 • Phone: (408) 727-1189 • Fax: (408) 727-5915 • www.nextec-rf.com
 April 10, 2003